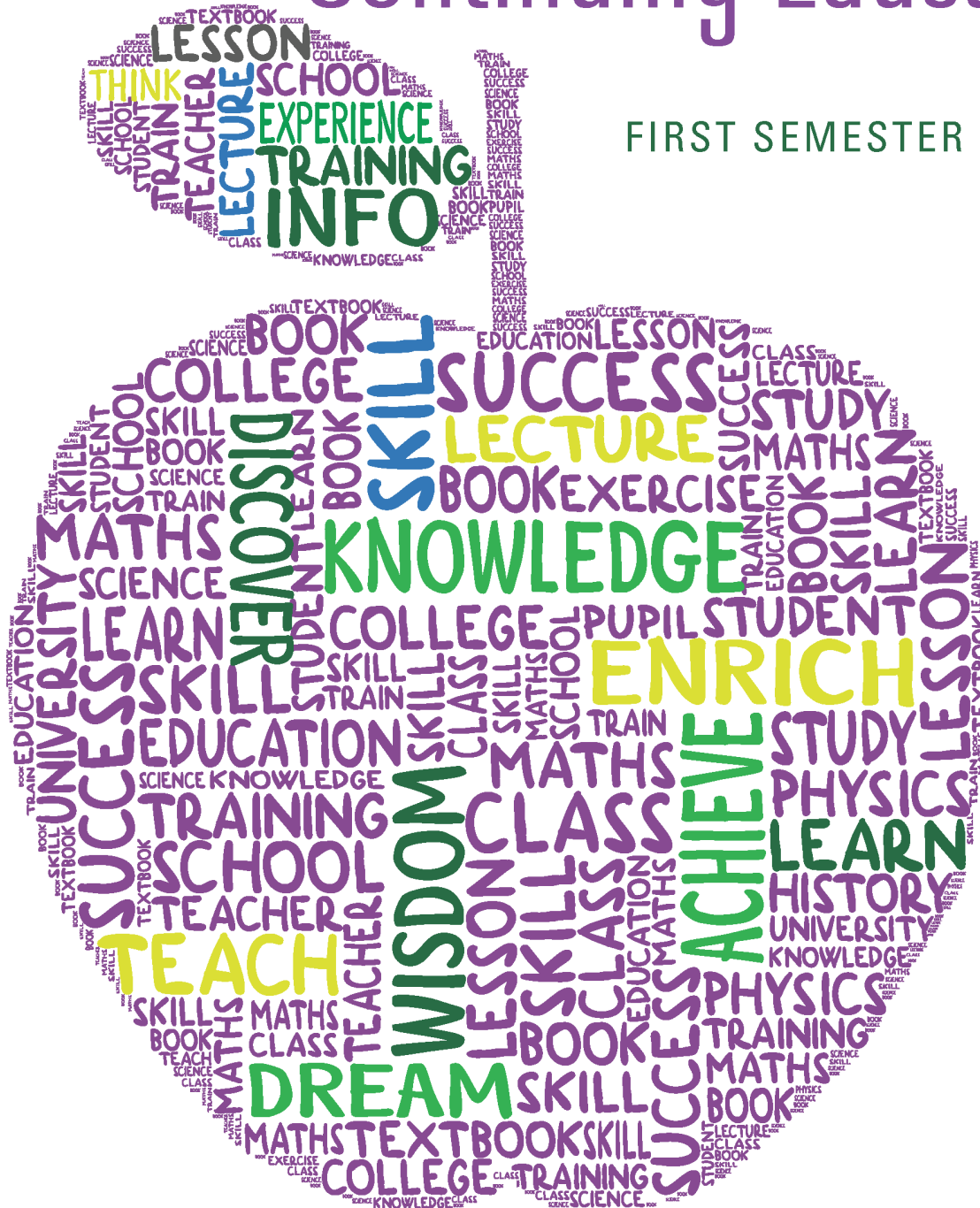


The William A. Keese School of Continuing Education

FIRST SEMESTER CATALOG



KEESE SCHOOL OFFICERS AND COMMITTEES

FIRST SEMESTER 2022-23

ADMINISTRATIVE COUNCIL

Bill Brown, President
Phil Grimley, Vice President
Frank Snyder, Dean
Jim Hathaway, Assistant Dean
France Pruitt, Assistant Dean
Susan Bushnell, Secretary
Bonnie Cochran, Assistant Secretary
Linda Pickle, Treasurer
Kathy Stephen, Assistant Treasurer
Ron Stevenson, Registrar
Paul Pruitt, Assistant Registrar
Dean, France, and Paul Pruitt, Catalog Editors
Don Woodward, Immediate Past President
Malcolm Frazier, Administrative Consultant

CURRICULUM COMMITTEE

Frank Snyder, Chair
Sarah Cavitt
Sandra Clunies
Jim Hathaway
Joyce Jones
John Logsdon
Rhoda MacKenzie
Jan Maddox
Frank Molony
Pam Parmer
France Pruitt
Sharon Rudy
Rolland Smith

ARRANGEMENTS COMMITTEE

Dave Reiser, Chair
Carolyn Lincoln
Paul Pruitt
Jane Reiser
Ron Stevenson

ATTENDANCE COMMITTEE

Barbara Briggs
Sarah Cavitt
Barbara Gould
Alice Smith
Lee Storms
Joyce Waugh

EDUCATION AWARDS COMMITTEE

Barbara Briggs, Co-Chair
Barbara Harbison, Co-Chair
Cathy Ballou
Thomas Bartlow
Roger Burkhart
Lois Gawler
Nancy Grissom
Lucinda Keister
Ann Scott
Frank Snyder
Jane Sween
Mary Wiehl
Barbara Brennan,
Special Events Coordinator

PUBLICITY COMMITTEE

Aurora Sevilla, Chair
Patsy Brill
Madeleine Bryant
Mary Ellen Ewing
Mina Forsythe Rempe
Frank Snyder
Marilyn Tippet
Rhoda MacKenzie, Photographer

NOMINATING COMMITTEE

Dean Hearn, Chair
Marilyn Andersen
Pat Brill
Art Forrest
Judith Shapiro
Harry Thomas
Robert Von Moss

THE WILLIAM A. KEESE SCHOOL OF CONTINUING EDUCATION

Established in 1978

FIRST SEMESTER (FALL) CATALOG

2022-23

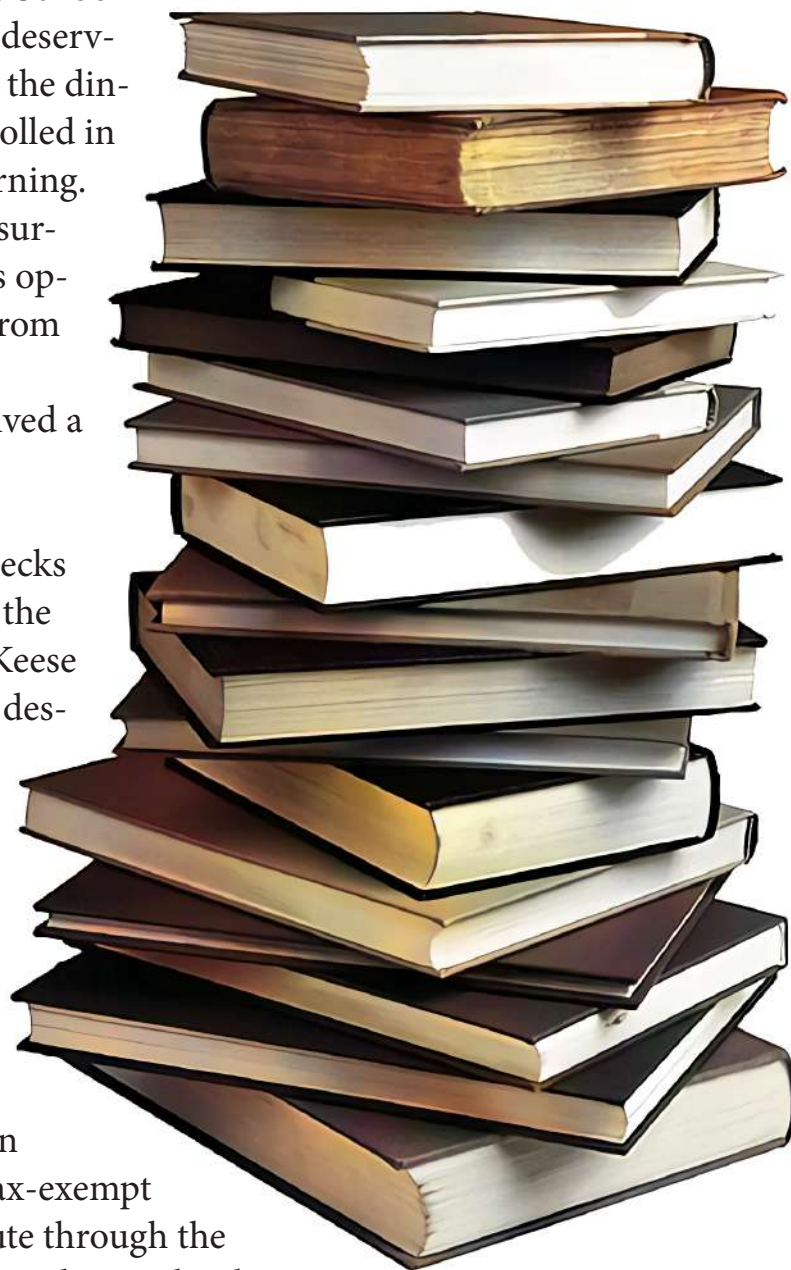
The Keese School is run by and for the residents of Asbury Methodist Village and offers a wide range of lectures, classes, and musical events.

The faculty consists of both resident and outside experts in a variety of fields. The academic year has two semesters that run from September through May.

THE KEESE SCHOOL EDUCATION AWARDS

Each year in May the Keese School gives Education Awards to deserving associates who serve in the dining rooms and who are enrolled in an institution of higher learning. The Awards are funded by surpluses in the Keese School's operating funds and by gifts from Asbury residents. In 2022, twelve associates each received a \$2000 award.

To make a contribution, checks should be made payable to the Asbury Foundation with "Keese School Education Awards" designated in the memo line. Please send your check to Kathy Stephen, Keese School's Assistant Treasurer (Courtyard Homes 431), for tabulation. She will forward your check to the Asbury Foundation, which will send you an acknowledgment of your tax-exempt gift. You may also contribute through the Keese School's website at www.keeseschool.org or the online registration system at www.keeseschoolcatalog.org.



Register online at www.keeseschoolcatalog.org and get \$2 off with the coupon code: 2dollarsoff

CONTENTS

ACADEMIC OFFERINGS

Evening Lectures and Musical Events 1-12

Daytime Courses and Seminars 13-18

NOTICES

The Keese School Education Awards ii

Directions to the Meeting Rooms 19

Cancellation Refund Policy 19

Other Educational Opportunities at Asbury 20-21

Registration and Attendance Notice 22

Blue Registration Forms (you should keep these) 23-26

White Registration Forms 27-30

(send to the Registrar with your check[s])

Register online at www.keeseschoolcatalog.org and get \$2 off with the coupon code: 2dollarsoff

EVENING LECTURES AND MUSICAL EVENTS

101 Once We Went to the Moon

Monday, September 12, 2022, 7:30 p.m. Hefner Auditorium

John M. Logsdon

December 2022 will mark a half-century since the final two Apollo astronauts explored the surface of the Moon. Presently, the United States, with NASA's Project Artemis and several privately funded efforts, is planning for new voyages to the Moon. Other countries, particularly China and Russia, have announced similar plans.

John Logsdon will discuss why John F. Kennedy, in 1961 committed the United States to send Americans to the Moon "before this decade is out." Furthermore, he will discuss why Richard M. Nixon, soon after the July 1969 success of Apollo 11, decided that there would be no more lunar voyages after Apollo 17 in 1972. The talk will feature video and audio clips of those two presidents related to Project Apollo. The talk will also address the character of current efforts to return humans to the Moon and perhaps someday to Mars and beyond.

Asbury resident John M. Logsdon is Professor Emeritus at George Washington University's Elliott School of International Affairs, where he was the founder and long-time director of the Space Policy Institute. He is the author, of articles, essays, and edited books, of the award-winning studies *Ronald Reagan and the Space Frontier* (2019), *After Apollo? Richard Nixon and the American Space Program* (2015), and *John F. Kennedy and the Race to the Moon* (2010). More information on Dr. Logsdon can be found at www.johnmlogsdon.com.



102 A Holy Land Pilgrimage

Thursday, September 15, 7:30 p.m. Parker Hall

Rev. Malcolm Frazier

In early 2022, Malcolm participated in a Holy Land Tour which included visits to the Church of the Nativity, the site of the Dead Sea Scrolls, the Sea of Galilee, the River Jordan, the Church of the Annunciation, and the Garden of Gethsemane. The tour, a collaborative project between Wesley Theological Seminary, Educational Opportunity Tours, and The Jerusalem Center for Biblical Studies gave him the opportunity to see a presentation of archaeological sites, and well-known locations from the Old and New Testaments. The Gospel stories came alive through visits to the places where Jesus and his disciples went. www.eo.travelwithus.com/holy-land#eotours



Rev. Dr. Malcolm Frazier is the Director of Pastoral Care and Counseling at Asbury Methodist Village, joining the community in 2019. He is an ordained elder in the Baltimore-Washington Annual Conference of the United Methodist Church. His previous appointment was Sr. Associate Pastor at Foundry UMC in Washington, D. C. Prior to that, he was a staff member at the General Board of Global Ministries, working in Manhattan as the Executive Secretary of Mission Volunteers, and then in Atlanta as the US Regional Representative in the Global Mission Connections Unit. He has also worked with the other program agencies of the UMC and the Racial Ethnic Caucuses.

EVENING LECTURES AND MUSICAL EVENTS

103 Symphony of the Potomac Chamber Players

Monday, September 19, 7:30 p.m. Rosborough Theater

Joel Lazar, Director



Several ensemble groups of the Symphony of the Potomac – including a string quartet, a woodwind ensemble, and brass players – will present a program of classical music covering four centuries. The musicians are members of the Symphony of the Potomac Chamber Players.

The Symphony of the Potomac is a community-based, primarily volunteer orchestra under the direction of Joel Lazar. The orchestra provides Montgomery County and the

Greater Washington area with the opportunity to enjoy symphonic music. Each year, they perform four concerts of classical music ranging from the 18th century to contemporary music, focusing on less-known works of well-known and little-known composers. Their first concert was in June 2008, having previously played together for nearly 40 years as the Jewish Community Center Symphony Orchestra in Rockville.

Maestro Lazar has directed the Symphony of the Potomac and its predecessor for more than 30 years. He has been acclaimed by the Washington Post as “...one of Washington’s premier conductors of both old and new music...” Their program will be introduced by Gillian Nave, who started playing cello at age 8 and has performed with the orchestra since 2015. www.symphonypotomac.org



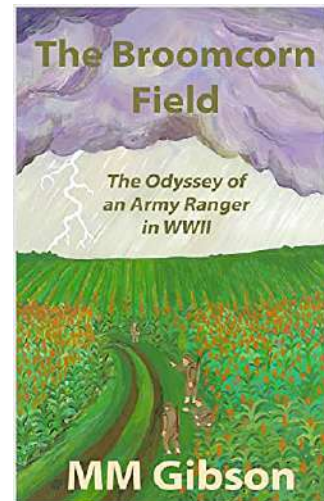
104 Writing Historically Accurate Fiction about World War II

Thursday, September 22, 7:30 p.m. Parker Hall

Michael Gibson

The *Broomcorn Field Series* currently includes two novels: *The Broomcorn Field* and *Leaving Pontotoc County*. The author will share his process for blending historical records with narrative and character development to enhance the reader’s experience. “I think fiction works if it’s historically accurate, and it can actually help people understand historical events more than just reading the history,” Gibson said. “I don’t know how you would describe the suffering that these women went through in WWII if you just did a sort of factual recounting.” “I like Franz Kafka’s explanation best: ‘A book must be the ax for the frozen sea inside us.’ Writing *The Broomcorn Field* and *Leaving Pontotoc County* certainly opened up my own frozen sea—and I hope it does so for my readers as well.”

Michael Gibson received his BA with Special Distinction in History in 1972 from the University of Oklahoma, where he was selected for Phi Beta Kappa, and he received his JD there in 1975. He has worked in both private law practice and with the federal government. His most recent book, *Can We Stop the Radical Religious Right?* is a critique of religious intolerance in contemporary America. He has begun work on *Can We Find Our Way Back Home?* which will be the third book in *The Broomcorn Field Series*. All the authors’ books are available on Amazon, search “Michael Gibson.” He currently resides in North Bethesda, Maryland.



EVENING LECTURES AND MUSICAL EVENTS

105 A Tour of Washington: What's New in 2022?

**Monday, September 26, 7:30 p.m. Hefner Auditorium
Christina Bauer**

In the past three years, three new memorials were dedicated in DC, a gigantic mural appeared on 16th Street and two new museums have opened in the city. Ongoing renovations and restoration projects are refreshing and brightening more familiar sites. Using photographs and videos, Christina Bauer will take us to iconic memorials and the latest DC attractions, and will re-acquaint us with the places that delight tourists and locals alike in the Capital city. www.washingtondctourguides.com



Christina Bauer is a Licensed Professional Tour Guide in Washington, DC. Her interest in history began with family visits to historic sites in her native Ohio. She graduated from Miami University and holds a master's degree from Indiana University. A resident of Montgomery County for 45 years, she had a library career with Computer Sciences Corp. She is certified to guide at the Washington National Cathedral, serves on the board of directors of the Guild of Professional Tour Guides of Washington, DC, and is a volunteer at the Museum of American Art and the National Portrait Gallery. www.facebook.com/ChristinaBauerDCTourguide

106 “Let’s Have Fun” by a Woodwind Quintet

**Thursday, September 29, 7:30 p.m. Rosborough Theater
Ensemble a la Carte**

Ensemble à la Carte (EALC), a woodwind quintet celebrating 22 years together, is thrilled to be back this fall at the Asbury Keese School with a program called **Let’s Have Fun!** featuring a variety of dances by Helga Warner-Buhlmann, Denes Agay, and Dmitri Shostakovich. The Ensemble will also present **A Playdate at a Picnic with Someone Special** by Jonathan Cohen, John Bratton, and Catherine Likhut.



EALC was formed in 2005 and is dedicated to exploring the vast variety of styles, arrangements and timbres used in chamber music including wind instruments. Although the core of EALC consists of the traditional woodwind quintet (flute, oboe, clarinet, horn, and bassoon), the group enjoys the wide variety of the chamber music repertoire by expanding and contracting to perform music written for as few as two and as many as thirteen instruments.

EALC enjoys the challenges of planning concerts using a creative mixture of music, tailored to appeal to each audience. In addition to musical performances, the concerts include traditional written program notes, highlighting interesting facts about the composers and their music. The members of the group also enjoy interacting with the audience during concerts, by providing spoken commentary about the music being performed, as well as “Ask Us Anything” sessions following the concert.

The ensemble looks forward to seeing everyone again for this fun, little-bit-of-everything, toe-tapping concert.

EVENING LECTURES AND MUSICAL EVENTS

107 Making a TV News Story

Monday, October 3, 7:30 p.m. Hefner Auditorium
Laura Strickler

Laura Strickler will walk us through how reporters get story ideas, using a broad set of research tools including Nexis and court documents. She will describe how they research these ideas, write and review drafts with editors and producers, and put together the stories for NBC News.

Laura is a national investigative journalist with NBC News, with more than 10 years of experience. She has broken national stories on White House security clearances, federal nursing home investigations, breakthrough COVID cases, and national opioid lawsuits and settlements. Her Emmy Award winning CBS News investigation into untested rape kits sitting on shelves was the first national story to expose this problem. She is an alumna of the Columbia University Graduate School of Journalism. www.nbcnews.com/author/laura-strickler-ncpn894696



108 Harmony Express Barbershop Chorus

Thursday, October 6, 7:30 p.m. Rosborough Theater
Frank Kirschner



Based in Montgomery County, Harmony Express is a barbershop style, mixed a cappella chorus. Founded in 2009, the chorus is a sought-out favorite of both the young and the young-at-heart. They sing at community events, annual shows, and annual competitions. They also enjoy delivering singing valentines and birthday greetings, and they look forward to bringing the joy of singing to Asbury. Their performance will include a mix of traditional barbershop songs along with patriotic songs and known tunes from movies.

Harmony Express is a chapter of the Barbershop Harmony Society, a non-profit organization of approximately 25,000 members in choruses and quartets, worldwide. The men and women of the chorus are dedicated to the mission of the Society which is “Everyone in Harmony.”

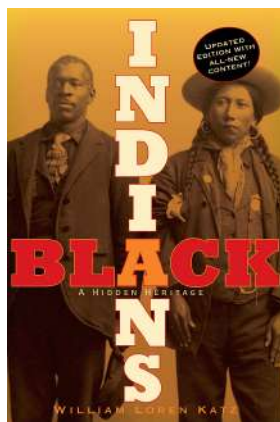
Frank Kirschner, the Director of Harmony Express, joined the Barbershop Harmony Society in 1974 with the Chorus of the Onondaga in Syracuse, NY. He was assistant director of the Singing Buckeyes when they appeared in International Competition in 1984, and assistant or associate director of several other Society choruses. Frank is originally from upstate New York. He has a PhD in Electrical Engineering from The Ohio State University and is a retired USAF Lt. Colonel. www.Harmony-express.org

EVENING LECTURES AND MUSICAL EVENTS

109 Old Myths, New Narratives

Monday, October 10, 7:30 p.m. Hefner Auditorium

Richard Buckley



The oldest myth was the Puritan's "City on a Hill," that God chose America for a special mission to the world. This myth was expanded after the Revolutionary War to American Exceptionalism, that white Christian people of the United States have a special destiny to lead the world toward liberty and democracy. In the 1960s, the Civil Rights Movement encouraged Indian and Black authors to write new narratives. We learned that millions of Indians died from European diseases and guns and that their culture was nearly destroyed. Blacks on slave ships died from horrible diseases and deadly torture by captains and their crews.

Recently, the Myth of White Supremacy – the fundamental American myth – has been connected to the Lost Cause promoted by the United Daughters of the Confederacy (UDC). Since the 1890s, the UDC cleverly spread this myth through thousands of monuments and textbooks in public schools throughout our nation.

The National Museum of the American Indian opened in 2004 and the National Museum of African American History and Culture in 2016. They are showing and telling the new powerful narratives that are increasingly confronting and correcting the Myth of White Supremacy.

Richard Buckley has been an accountant, army artillery officer, attorney, author, poet, playwright, and school principal. For 24 years, he was the supporting spouse of Ambassador Prudence Bushnell. His life-time avocation is the history of American Indians and African Americans. They live in Park View.

110 Montgomery County's Sister Cities

Thursday, October 13, 7:30 p.m. Parker Hall

Bruce Adams

Join Bruce Adams on an excellent adventure as he leads you on a tour of Montgomery County's five Sister Cities: Morazán, El Salvador; Gondar, Ethiopia; Xi'an, China; Hyderabad, India; and Daejeon, South Korea. When the Sister Cities program was developed here, he knew that it would strengthen our cultural competence and build relationships with the extraordinary people who have come to Montgomery County from every corner of the globe. He believed that having residents who understand every culture and speak nearly every language would give our county an edge in the global marketplace.



Sister Cities International was created by President Eisenhower in 1956 at a White House conference on citizen diplomacy. Eisenhower envisioned an organization promoting peace and prosperity by creating bonds between people from different cities around the world. From 2009 to 2018, former County Executive Ike Leggett created and supported a Montgomery Sister Cities nonprofit organization. He partnered with that group and Montgomery College to establish the five Sister City relationships. Since one-third of Montgomery's more than one million people were born in other countries, the Sister Cities program has strengthened the county government's engagement with our diverse community.

As a former member of the Montgomery County Council, Bruce Adams served as director of the Office of Community Partnerships for Leggett. The Sister Cities program was one of Leggett's top priorities in his goal of making Montgomery County one of the world's most welcoming and diverse communities.

EVENING LECTURES AND MUSICAL EVENTS

111 The Library of Congress: A Personal Tour

Monday, October 17, 7:30 p.m. Hefner Auditorium

Caroline Saccucci

Caroline Saccucci, Chief of the U.S. Programs, Law, and Literature Division at the Library of Congress, will provide an overview of the history and purpose of the Library of Congress. As a former docent in the Great Hall of the Jefferson Building, she will also offer a glimpse of selected artwork in the building and explain why it resonates for herself and many others. If you ever opened a book, looked at the copyright page, and wondered what “Library of Congress Cataloging-in-Publication” is all about. Caroline will have an answer for you as she describes the important national and international library programs in the division she heads.



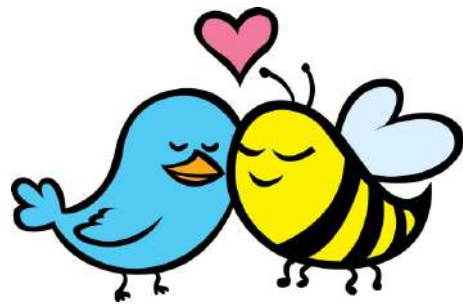
Caroline Saccucci is the Section Head of Cataloging in the Publication and Dewey Section of the Library of Congress. She is currently a co-chair of the Public Libraries Technical Services Interest Group. She serves as the Liaison to the Subject Analysis Committee and as a representative to the Dewey Decimal Classification Editorial Policy Committee. She has co-written articles published by *Cataloging and Classification Quarterly* and *Library Resources & Technical Services*. She has a BA in history from Longwood University and an MLS from Simmons College.

112 The Birds, the Bees, and the Censors

Thursday, October 20, 7:30 p.m. Parker Hall

Phyllis Reynolds Naylor

For Trott resident Phyllis Naylor, the most thrilling part of being an author is not the applause or the awards, but the moment a character comes alive on paper, or the place that existed only in her head becomes real. She has also had the “distinction” of seeing her *Alice* series appear at the top of the American Library Association’s banned book list for several years—books that libraries support and defend, despite various groups or individuals who want them removed from the shelves. In her talk, Phyllis will focus on some of these experiences and will share letters, pro and con, from parents, teachers, and readers.



Phyllis majored in Psychology at American University and was able to pay much of her college tuition by writing and selling short stories. She was planning to become a clinical psychologist working with children, but decided that writing was her first love, and gave up graduate school so that she could write full time. Phyllis has authored 140 books, fiction, and nonfiction, for both children and adults; many are in the Trott library. Her children’s novel, *Shiloh*, was awarded the Newbery Medal in 1992. www.phyllisnaylor.com

EVENING LECTURES AND MUSICAL EVENTS

113 Dr. Stonestreet in Rockville

Monday, October 24, 7:30 p.m. Hefner Auditorium
Clarence Hickey and Mary Lou Luff

Dr. Stonestreet (Clarence) was a doctor in Rockville from 1853 to 1903. He and his mother (Mary Lou) will reenact, in costumes, their lives in the middle of the 19th century, bringing a medical bag with the tools of the trade with artifacts of that period. This enclosed one-room doctor's office was built in 1850 for Dr. Edward Elisha Stonestreet of Rockville, who had just graduated from the University of Maryland medical school. He served as one of the town's doctors until his death in 1903. During the fifty-one years of Dr. Stonestreet's practice, medical knowledge and technology underwent many radical changes, including instruments and tools, pharmaceutical items, and more. Dr. Stonestreet served as a Civil War contract surgeon with the US Army 1862-1863 and was assigned to an Army Hospital in Rockville. The US Army converted the Montgomery County Courthouse, the predecessor of the still-standing Red Brick Courthouse, and its grounds into a temporary hospital from September 1862 till January 1863. It is likely that Dr. Stonestreet was the surgeon in charge during that time.



Clarence Hickey wrote a biography, *Send for the Doctor*, published by Montgomery History in 2009. Diamond resident, Mary Lou Luff has written a pamphlet published by Montgomery History, detailing the lives of people in Rockville. Both will be available at the lecture. www.montgomeryhistory.org/stonestreet-museum-of-19th-century-medicine/

114 Byline: Ernie Pyle

Thursday, October 27, 7:30 p.m. Rosborough Theater
Steve LaRocque



Byline Ernie Pyle is a one-man show by Steve LaRocque that showcases excerpts from the wartime columns of Ernie Pyle. The script, created and performed by Steve, consists entirely of excerpts from Pyle's reports from the front where he was one of the first "embedded" reporters. Ernie Pyle wrote a column that ran daily in Scripps-Howard newspapers during World War II and recounts the major events of that war in Pyle's own words. The actor becomes the reporter, appalled at the tragic waste of war and the brutal conditions it imposes on the men who fight it, yet personally committed to going back to it again and again.

Steve has been active in the greater Washington area since 1994 as a performer, director, and playwright. He is a charter member of the Quotidian Theatre Company and has appeared in over twenty Quotidian productions. Steve also has been writing performance pieces, from comedy sketches to full-length plays, since 1976, while simultaneously pursuing a 29-year career as a Navy officer, from which he retired in 2005. (He suspects that he may be the only playwright to have had a script produced on board a Navy submarine on patrol.)

EVENING LECTURES AND MUSICAL EVENTS

115 Hopes and Concerns for Africa's Future: A Discussion with AMV Associates

Monday, October 31, 7:30 p.m. Hefner Auditorium

Prudence Bushnell

Ambassador (Ret.) Pru Bushnell will lead a conversation with three African AMV Associates about the future of Africa. The discussions will include:

- What are the challenges and strengths of the people of sub-Saharan Africa?
- How will climate change affect the region?
- What impact does world power politics have on Africa's everyday citizens?
- What impact does Africa have on world power politics?



The Associates are Belinda Degboe (Ghana), Mo Lawani (Benin), and Dorothy Mbori (Kenya).

Pru joined the U.S. Foreign Service in 1981 after a career in management training. She served in Senegal, India, Kenya, and Guatemala – as well as in the Department of State – until 2006, when she retired as Dean of the Leadership and Management School of the Foreign Service Institute. She subsequently founded the Levitt Leadership Institute at Hamilton College. Her acclaimed book, *Terrorism, Betrayal and Resilience: My Story of the 1998 U.S. Embassy Bombings*, is available on Amazon. Pru and her husband Richard Buckley live in Park View and are both active in the Keese School. www.PrudenceBushnell.com

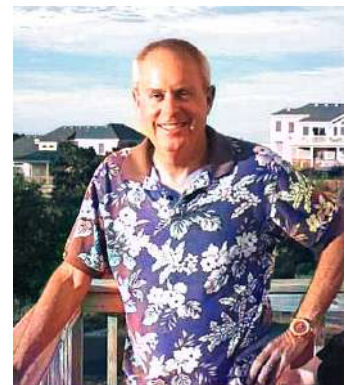
116 Earth's Energy Balance and Why the Climate is Changing

Thursday, November 3, 7:30 p.m. Parker Hall

Jud Stailey

The earth-atmosphere system is extraordinarily complex, but a simple model describes the role that greenhouse gases play in its energy balance. Increasing global temperatures are correlated with the increase in greenhouse gases, over and above what can be expected from natural climate variability. Increasing global temperatures create environmental crises and threaten individual health and safety, regional prosperity, and national and international economic, social, and political stability. Actions to reduce greenhouse gas emissions to net zero are needed to stabilize the energy balance and limit the impact of climate change.

Jud Stailey grew up in central Ohio and attended The Ohio State University, where he earned a degree in Civil Engineering and a commission in the Air Force. His initial Air Force assignment was to the University of Texas where he studied meteorology. His many subsequent assignments included commanding the Air Force's climatology center. After retiring from the Air Force, Jud worked as a senior program manager, supporting programs at NASA's Goddard and Langley Centers. His last years before retirement were spent at NOAA as chief scientist in the office that coordinates meteorological activities among Federal agencies, the American Meteorological Society www.ametsoc.org, the National Weather Association www.nwas.org, and the American Geophysical Union www.agu.org.



EVENING LECTURES AND MUSICAL EVENTS

117 Asbury Birds

Monday, November 7, 7:30 p.m. Parker Hall

Dan Neumann

The ponds and the wildlife area at Asbury Methodist Village provide a wide variety of habitats for birds. So, it's not surprising that many species of birds either make their home here or find suitable temporary accommodation. Dan Neumann has identified more than 100 bird species on our campus and has photographed many of them. He will show some of his favorite photos and relate anecdotes about how these birds survive in the wild. Dan and his wife Janet, both residents of Park View, invite you to learn more about your Asbury feathered neighbors.



Dan and Janet have been interested in nature their entire lives. A bit over a decade ago, Dan realized that if you want to see interesting animals in the wild, you should look for birds, as you always see birds when you are outdoors. This started him on a slow immersion into birding, beginning as a “backyard birder.” Many species of birds look quite similar. So, to help identify them, he started taking photographs, which allowed him to look for identifying details later. Dan is often seen around the ponds with his binoculars and camera. He is a physicist who earned a BS from Arizona State University and MS and PhD degrees from the University of Illinois at Urbana-Champaign. He works at the National Institute of Standards and Technology here in Gaithersburg.

118 Strengthening Our Community Peace by Peace:

The Conflict Resolution Center of Montgomery County

Thursday, November 10, 7:30 p.m. Parker Hall

Thomas Dunne and Molly Wilson

In 1999, a group of Montgomery County citizens came together to create a nonprofit organization that would enable people having neighborhood or community disputes to talk it out rather than fight it out or go to court. The aim was to move the community's culture from an adversarial stance to cooperative problem-solving when conflicts arise. The Conflict Resolution Center of Montgomery County (CRCMC) officially opened in July 2001 in the Executive Director's home. Since then, the Center has grown to include programs in the public schools, the district court, local correctional facilities, and more. The Center's mission is to promote and provide collaborative problem-solving processes throughout Montgomery County and thus to strengthen our community peace by peace.



Tom Dunne, a co-founder of the Center will describe his dream of creating such a center, which began during his service in Vietnam as a U.S. Navy frogman and was made possible by the emergence of the field of peacebuilding and conflict resolution in the past few decades. He has an MA from Georgetown University in International Relations. Molly Wilson, the Senior Program Manager of CRCMC, who has been with the Center for the past eight years, will describe the Center's services and volunteer opportunities. She received her BA in Political Science and Psychology from UMBC.

EVENING LECTURES AND MUSICAL EVENTS

119 Carmina

Monday, November 14, 7:30 p.m. Rosborough Theater
Vera Kochanowsky, Director

Carmina, Latin for “poetry” or “songs,” is a chamber choir devoted to exploring the diverse musical styles of the Middle Ages through the Baroque. Founded in 1998, the group has sung at such prestigious venues as the National Gallery of Art, the German Embassy, the Washington National Cathedral, and the Church of the Annunciation. Carmina has received praise from the *Washington Post*, and the *Baltimore Sun* noted the group’s “gorgeous tonal balance.” Carmina singers hail from the greater Washington area.



Vera Kochanowsky, founder and director of Carmina, is a professional harpsichordist and graduate of the Oberlin and New England Conservatories. She holds a Doctor of Musical Arts degree from Stanford University, where she specialized in the performance practices of the 17th and 18th centuries. She teaches harpsichord, voice, and chamber music. She also regularly lectures about her father, whose autobiography, *Lenin, Hitler and Me*, she published in 2016. www.CARMINA.org

120 Asbury Resident Art Gallery

Thursday, November 17, 7:30 p.m. Rosborough Theater
Jan Maddox, Hedly Taima, Barbara Kilby

The Asbury Resident Arts Committee (RAC) will host a panel of seven representative resident artists who have their art on display in the new Resident Art Gallery. The host will give a brief history of the resident art displays and then lead a conversation with the artists about their art and the new gallery. The artists will briefly answer the following questions:

- Why did you become an artist, and how did you develop your skills?
- What is your current art medium and style?
- What are you showing us today, and what is in the new display cases?
- What art are you planning next?

The panel artists are Bridget and Richard Zemlo, woodturning art, ceramics, and basket weaving; Frances



Lederer, oil painting and sculpture; Sigrid Vollerthun, photography-based images; Judith Kahn, printmaking art; Ruth Lotz, watermedia paintings; and Dot Hartley, quilts. The previous Asbury Gallery has been replaced with the new Resident Art Gallery with better lighting, larger display cases, and a wide variety of resident art in various media and styles. The Asbury Resident Arts Committee (RAC) meets monthly and is open to all residents. Contact Co-Chairs Barbara Kilby or Lucinda Keister. Hedly Taima is Curator of the Resident Art Gallery, and Rhoda MacKenzie is the Keese School photographer.

EVENING LECTURES AND MUSICAL EVENTS

121 Spectacular Building Failures

Monday, November 21, 7:30 p.m. Hefner Auditorium

John Gross

Examining structural building failures leads to better and safer buildings. However, determining the root cause of a failure can be extremely challenging, as the critical evidence hides among the ruins. In his 34-year career at NIST, John Gross has resolved numerous failure investigations through his rigorous yet creative analytical approach. John will discuss several spectacular building failures and the hunt for root causes. Among them are the Ambiance Plaza construction failure, the collapse of the Dallas Cowboys indoor practice facility due to high winds, and the World Trade Center building 7 collapse due to fire.



John Gross recently retired after 34 years working for the National Institute of Standards and Technology (NIST), formerly the National Bureau of Standards. He was on the faculty of the University of Colorado, Boulder. Since joining NIST, Dr. Gross has either led or contributed to seven failure investigations. John is a Fellow of the American Society of Civil Engineers (ASCE) and a licensed Professional Engineer. He has received a number of awards such as the Wason Medal for Most Meritorious Paper

from the American Concrete Institute in 1988, and he was named among the “Top Ten Federal Engineers of the Year” by the National Society of Professional Engineers in 2001.

122 Asbury Residents’ Support for Afghan Refugees

Monday, November 28, 7:30 p.m. Hefner Auditorium

Spence Limbocker, Moderator

Since August 2021, when the US withdrew its military forces from Afghanistan, the government has evacuated more than 76,000 Afghan nationals to the US. They are being resettled in communities across the country, in coordination with more than 290 local resettlement agencies. In most cases, the refugees are housed on military bases before being sent to those communities. The resettlement depends on the generosity of local nonprofits, receiving very little support from the US Government.



Many Afghan refugees have been resettled in the DC area with a large number in Montgomery County. The Gaithersburg Beloved Community Initiative (GBCI), working with several residents of AMV, has collaborated with other nonprofits to integrate these new residents into our local communities. This support has included welcoming the family, locating housing, furniture, and household articles, providing help with language training, finding a job for the man of the house, assisting with transportation, and most importantly providing financial support until they become financially independent.

The program moderator will give an overview of the Afghan refugee issue in Montgomery County. Speakers: Candy Warner, an AMV residents who has been involved in this effort; Chris King, a leader of the New Neighbors Interfaith Alliance, a local resettlement agency; and a member of one of the Afghan families.

Spence Limbocker is Chair of GBCI and an AMV resident.

EVENING LECTURES AND MUSICAL EVENTS

123 The Hot Lanes Presents: A Festive Evening of Jazz Featuring the Great American Songbook and Others

Thursday, December 1, 7:30 p.m. Rosborough Theater

Bobby Jasinski

The award-winning group, The Hot Lanes, is a 16-piece culmination of a dream Bobby Jasinski had in 2014. Influenced by Wynton Marsalis and the Jazz at Lincoln Center Orchestra, Bobby's focus for The Hot Lanes is to promote jazz in the DC metropolitan area. They play at festivals and concerts, give educational masterclasses in the public schools, and appear in other venues. They are a diverse and talented group of musicians who also arrange and compose. Their concert will feature arrangements of popular standards from The Great American Songbook as well as holiday classics.



Bobby Jasinski, a native of New York City, started piano at age five. He honors his ethnic roots from Latin rhythms to Polish classics to Italian folk melodies to American jazz. A composer and arranger, Bobby studied conducting with Shizuo Kuwahara, and currently studies composition and arrangement with Grammy award winner Ted Nash. Bobby is a member of the BMI Jazz Composers Workshop in Manhattan NY. In the DC area, Bobby has appeared at the Kennedy Center (including two and a half years at the Roof Terrace Restaurant Sunday brunch), Twins Jazz, HR-57, the Swedish and French embassies, the World Bank, the National Press Club, and Strathmore.

124 & 125 Readers Theater at Asbury

Monday Dec. 5 and Thursday Dec. 8, 7:30 p.m. Parker Hall

Nancy Hirsche and Rollie Smith



The Asbury Play Readers are entering their seventh year with the Keese School. The performers are all residents of Asbury who act in comic skits and scenes from plays “script in hand,” which means no memorization required. For those interested in joining the Readers, auditions will be held on Tuesday, September 13th from 2:00-4:00 in the Rosborough Community rooms. For those who merely want to be spectators, register as usual but watch for notices.

Nancy Hirsche and Rollie Smith are co-directors of the Readers Theater at Asbury. Nancy began her career as a mezzo soprano singing with opera companies in eastern New York and western Massachusetts. Later, she acted in commercials and soaps in

New York City. In recent years, she has acted in readers theater groups in Sarasota and the Theatre Hopkins in Baltimore. Five years ago, she came to Asbury where she introduced Readers Theater. Rollie Smith acted in plays in high school and college and, after that, taught speech, helped coach dramas, and worked with readers theater.

Note: The same skits will be presented on both nights, December 5 and 8.

DAYTIME CLASSES AND SEMINARS

151 Change and Uncertainty: The High Stakes of the 2022 Mid-Term Congressional Elections

Six Tuesdays (October 11, 18, 25, November 1, 8, 15) 2:30 to 4:00 p.m. Parker Hall and

six Wednesdays (October 12, 19, 26, November 2, 9, 16) 7:30 to 8:30 p.m. on ZOOM

Irving Spitzberg

This Course will monitor the 2022 Mid-Term Congressional Elections, which may be the most consequential mid-term election in decades. We will discuss such issues as:

- The disputes between Democrats and Republicans and within the parties are more acute than they have been in decades.
- The electorate is the most politically polarized in twenty years.
- Some half of the electorate no longer trusts the integrity of the electoral process.
- Since 2020, Republican state legislatures have enacted laws changing the electoral process. Will this make a difference?
- The rural-urban political division between and within states has widened in the past few decades.
- The long-simmering disagreements over abortion have reached a boiling point. How will this affect voters?
- How will the historically high rate of inflation impact voter psychology?
- Will Donald Trump maintain his iron grip on many Republican voters?



Irving will systematically address the main issue on Tuesday afternoons and host a deeper discussion on the following Wednesday evenings. During the latter sessions, Paul Carton, PhD, a seasoned pollster, will share what he considers the most significant trends. David Warner, Esq., a federal lawyer, will help analyze the changes in state election laws and voting procedures in relation to federal laws. Irving's friends in some critical swing districts across the US will report on their local press coverage.

The national newspapers, the *Washington Post* and the *New York Times*, broadcast networks, cable channels, and social media will be our weekly information resources.

Irving Spitzberg, an Asbury resident, is a former professor and dean at the Claremont Colleges, Brown, and SUNY/Buffalo. He also was the CEO (General Secretary) of the American Association of University Professors and the founder of the Council for Liberal Learning in Washington, DC. Irving has studied, taught, and written about leadership for thirty years, focusing on leadership in politics, higher education, and civic life. A graduate of Yale Law School, he also practiced immigration law in the 1990s.

No Maximum enrollment; No Prerequisites; Registration: \$2.00.

Send questions to irvingspitzberg1@gmail.com

DAYTIME CLASSES AND SEMINARS

152 The History and Archeology of the Bible: A DVD presentation by Jean-Pierre Isbouts

Twelve Wednesdays 10:00-11:30 a.m. Wallace Community Room

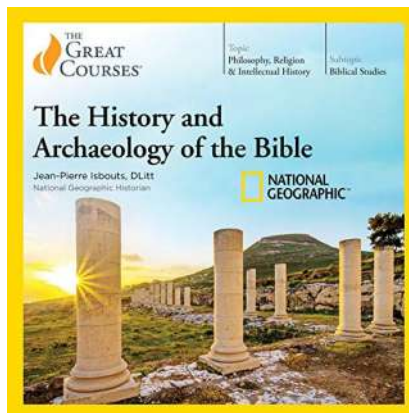
John Locke, Facilitator

September 21 to December 7

The Bible is not a history book. It is a book of faith, containing mainly religious and spiritual writings. Yet, each of its stories originated in a particular place and time, and many of them intersect meaningfully with what we know about the ancient world.

This course attempts to bring the methods and insight of historians and archaeologists to bear on the narratives of the Bible. National Geographic has joined with the Great Courses to present this DVD series. Its coverage from Genesis to the Crucifixion include the latest historical and archaeological findings accompanied by vivid video footage of many of the sites where the stories in the Bible unfolded.

Jean-Pierre Isbouts, DLitt, is a National Geographic historian. In addition to exploring the connections between scripture and the historical record, he also draws attention to cases where the findings of historians and archeologists differ from biblical accounts. John Locke, a Catholic deacon and resident of Trott, facilitates this series of videos.



Registration: \$1.00. The syllabus with days and topics will be provided to the students.

153 Writing Memoirs, Creating a Legacy

Third Tuesday of the month from 2:00-3:30 p.m. Hefner Arts and Crafts Room

Jack Hauber

September 20, October 18, November 15, December 20, 2022

January 17, February 21, March 21, April 18, May 16, June 20, 2023



Each semester, for the last 15 years, the memoirs class has been a Keese School offering. In that time, over 200 participants have written more than 1,000 memoirs about people, events, and experiences that have shaped their lives.

Everyone has a story worth telling, so why not start now? Bring alive your photos, documents, and anecdotes to share with your children, grandchildren and future generations. You will be more than a leaf on the geological tree! Do you need motivation to begin? Come join some of your neighbors who enjoy writing their memoirs. Listen to the essays they prepare each month, and before long, you will begin

to recall, describe and preserve memories of the road only you have traveled. Some of our residents have published a book of their memoirs, but all who have written memoirs have created a valuable legacy.

Jack Hauber, an Asbury resident, has been a participant in the memoir classes for three years and recently took over the position of facilitator from Murray Schulman. When Jack started in the class, he told Murray that he couldn't write, but Murray replied "If you can talk, you can write." Three years later, there is a book that proves Murray was correct.

Registration: \$3.00 for the Fall Semester

DAYTIME CLASSES AND SEMINARS

154 Great Decisions

Four Tuesdays, 2:00 - 3:30 p.m., Park View, Club Room

Pat Brill and David Winfield, Coordinators

Sept. 20, Oct. 11, Nov. 1, Nov. 22

Great Decisions entered its tenth year at Asbury with four topics in the spring and four topics in the fall. The Great Decisions booklet by the Foreign Policy Association prepares the enrolled for each topic on a current issue in international relations and foreign affairs. Sessions include a DVD presentation, a guest speaker, and a group discussion of the topic.

Sept. 20 Industrial Policy - Ken Rogers, David Winfield

What policies can the U.S. implement to deal with the international economy and trade with a rising China?

Oct. 11 The Quad Alliance - David Winfield

How effective will be the dialogue between Japan, Australia, and India in an effort to contain China?

Nov. 1 Changing Demographics - Linda Pickle

Demographics/sustainability of human populations have social, economic, political, and environmental effects

Nov. 22 Biden's Agenda – William Brown

How will issues such as climate, the pandemic, and alliances be treated under the Biden administration?

Pat Brill has degrees in International Relations and Nursing. She has been a Care Coordinator for two hospitals; a Planning Commissioner for the City of Newark, DE; a board member of the Newark Senior Center, an instructor for three nonprofit programs, and President of the League of Women Voters in Newark.

David Winfield has BA biology, MA Applied Physics, PhD Engineering, all from Harvard University. He was employed by IBM and Lockheed Martin to compute the orbits of GPS satellites. In retirement he volunteered in engineering classes at Watkins Mill High School.

The Great Decisions booklet that covers both semesters is \$30, which includes admission to all sessions. Otherwise, \$5 for a single session for individuals who have not purchased the booklet."



DAYTIME CLASSES AND SEMINARS

155 The Tyrant and His Base: A Study of Authoritarian Populism

12 sequential Fridays 10:00 a.m.-12:00 noon Hefner Arts and Crafts Room

Winston Davis

September 30 to December 16

A beyond-the-headlines look at populism in 21st century America. The class will discuss what populism means, its causes, its relation to other political movements, its addiction to conspiracy theories and “alternative facts,” and the challenge it poses to political norms and future elections. Special attention will be given to the nature and composition of the populist Base and the impact of economic change, immigration, and the civil rights movement on that base. The class will first look at tyranny and democracy in ancient

Greece and in the writings of Plato, Aristotle, and Polybius. We will then examine the role of dictators and tyrannical emperors in Roman history. Most of the course will be devoted to an examination of the conflict between modern liberalism and totalitarianism (forms of government largely unknown in the ancient world). It will end with a discussion comparing these regimes with contemporary populist governments. Format: Power Point presentations followed by discussions of the assigned text. Required reading: Ezra Klein, *Why We're Polarized* (Profile Books, 2021). (Inexpensive copies are readily available on Amazon.)

Winston Davis earned his MA in Greek literature from Columbia University and his PhD in the History of Religions from The University of Chicago. He taught at Stanford University, Kwansai Gakuin Daigaku (Nishinomiya, Japan), Southwestern University, Princeton University, and the Free University (Berlin, Germany) before retiring from Washington and Lee University. He and his wife Linda have lived at Asbury since 2016. He has previously led Keese School courses on Greek history, Stoicism, and Buddhism.

Registration: \$1.00.



DAYTIME CLASSES AND SEMINARS

156 Shakespeare's *The Winter's Tale*

Five Mondays, 10:00-11:30 a.m. Hefner Auditorium
Sandy Mack

October 3, 10, 17, 24, 31

Sandy Mack's favorite Shakespeare play is a tough play that needs discussion. Shakespeare's next-to-last solo-authored play (just before *The Tempest*), *WT* takes the *Othello* jealousy story, slips Iago inside Othello, and crams that plot into two and a half acts. This leaves him half the play to go places he's never been before that forces the reader to ask painful and exciting questions about love, marriage, damage, patience, and regeneration. There's a 16-year gap in the middle of the play. It moves from urban Sicilia to pastoral Bohemia and back. We get the best stage direction in all of Shakespeare, "*Exit, pursued by a bear,*" and the final scene offers one of the most marvelous theatrical experiences in dramatic literature—Shakespeare's finest moment of wonder.

The magic of the fairies in *A Midsummer Night's Dream* is easy and fun. This play's "magic—a healing pastoral world, patience almost beyond belief, and a breathing statue—is much more complex. And yet profoundly simple.

Classes will meet five times, spending a lot of time on the last two acts. Considering our experience in a Keese class in the spring 2022 with another play, it is required that all registrants work from the same text, so we can find quickly what we are talking about. If you sign up for this class, please contact me (mmack@umd.edu; x5472) for book-ordering information. The cost of the book is \$9.00, or maybe much less.

Sandy Mack lives with his wife Elaine in Diamond. He taught English literature at Harvard, the University of Maryland, the Folger Shakespeare Library, and Shakespeare & Company in Lenox, MA.

Registration: \$1.00. Maximum enrollment 30. Send questions to mmack@umd.edu



DAYTIME CLASSES AND SEMINARS

157 Art Class

Four consecutive Fridays, 1:00-3:00 p.m. Hefner Arts and Crafts Room

Doris Bryant

September 30, October 7, 14, 21

This beginning/intermediate level course includes fundamentals of drawing, perspective, composition, and the challenges of working from photos. Each class will start with a brief discussion and demo of that week's focus. Students will then work individually on a drawing (any dry media) based on a photo of their choice. Individual assistance will be provided as needed. Optional group critiques will be offered at the end of each class. Students should bring reference photos (a 10x12 printed copy) and their art materials to the first class. A supply list will be provided two weeks prior to the class.



Doris Bryant received her formal art education at The University of Kansas, earning her degree in Illustration, and she has continued her training by studying with many artists. She is mainly influenced by such masters as John Singer Sargent, James McNeill Whistler, Howard Pyle, and N. C. Wyeth. Their art is her inspiration for excellence and growth in her own work. She has many commissioned works in private collections throughout the United States. She has taught at Leisure World and Plaza Arts as well as privately. Doris' style is classical realism. She prefers working in dry mediums such as graphite, charcoal and especially pastels. Pastels are immediate; lush and bold or gentle and calming.

Registration: \$60.00, Minimum enrollment: 5, maximum: 10.

Directions to the Meeting Rooms

Hefner Auditorium: From the main entrance to Hefner Community Center, walk around the central railing all the way to the back of the lobby. The wall ahead of you is the front of the auditorium. Go down the left-hand or right-hand corridor and you will find double doors into the auditorium.

Hefner Arts and Crafts Room: From the main entrance to Hefner Community Center, walk to the right around the central railing all the way to the back of the lobby, and go down the right-hand corridor. The Arts and Crafts Room is on the right across from the entrance to the auditorium.

Parker Hall: From the Apartment Center, take the elevator down to the ground floor and turn right on exiting. Parker Hall is immediately in front of you. OR, enter the Rosborough Center main front entrance from the parking lot, turn right after the Sandy Spring Bank, and take the first left turn. Walk all the way to the end of that hall, through the double doors, and down the next hall to the dead end. Turn right and continue walking through double doors and twists and turns until you come to Parker Hall on your right.

Park View Club Room: Go through the main entrance to Park View Apartments and turn right. The Club Room is immediately in front of you.

Rosborough Theater: Enter Rosborough through the main front doors and turn right after the Sandy Spring Bank. The theater double doors are on the left ahead of you, just after the hall that goes off to the left. OR, from the Apartment Center, take the elevator to the ground floor, turn right, and walk through twists and turns and then through double doors leading to a hallway that goes downhill. Walk down that hallway and turn left at the first opportunity. Go through the next set of double doors, past the swimming pool and display cabinets, and you will come to the double doors of the Theater on your left at the end of the hall.

Wallace Community Room: Enter Hefner through the main entrance and walk past the concierge desk and down the first corridor on the right. After entering Wallace, take the first left and the Community Room is on the left.

CANCELLATION-REFUND POLICY

No refund of fees or charges for materials will normally be made.

Special circumstances will be considered individually.

In any special case, please call Ron Stevenson, ext. 4609
or Paul Pruitt, ext. 5229.

Other Educational Opportunities at Asbury

CYBER ASBURY: Cyber Asbury is an umbrella organization coordinating the activities of the **Computer Club** (Microsoft Windows computers), **Apple Corps** (Apple computers, iPhones and iPads), **Asbury Photo Group** (taking and preserving video and still photographs), and the **Heritage Lab** (digitizing Asbury's history). Both the Computer Club and Apple Corps organize and sponsor training in the use of computers. There is also a periodic public presentation of a lecture on a computer related topic. A monthly digital newsletter containing articles from all 4 groups is available by email. News and activities appear on AVTV and are available on the Asbury Connected Living app on your computer or smart phone. For other information contact Norman Wolfe - nwolfe556@comcast.net or x4842.

- For a **Cyber Asbury newsletter** subscription please send your full name (even if already imbedded in the email address) and your email address to Donna Marino - donna6marino@gmail.com. Please indicate whether you are interested in Apple, Windows, Photo group, or Heritage Lab or any combination.
- For information about **Windows** classes, please email Robert Nisbet - renisbet@outlook.com.
- For information about **Apple** classes, please email Jim Utterback - jimu22@comcast.net.
- For information about **Asbury Photo Group**, please email Paul Schneeman - pschnee@me.com.
- For information about the **Heritage Lab**, please email Hal Gaut - halmarilyn@hotmail.com.

Computers are available for all residents to use without charge. In addition, printers, including a large sheet printer, are also available for use. Please pay for the paper and ink in the provided honors box.

THE COMPUTER CLUB oversees the Windows computers in the Smithey Technology Center in Rosborough and the Carpenter Computer facility on the ground floor of Diamond. Training in the use of Windows 10/11 is available. For information and sign-up, contact Barry Thomas - bthomas775@comcast.net or Robert Nisbet - renisbet@outlook.com. Windows technical support is available each Thursday from 1:00 to 3:00 pm in the Smithey Center.

APPLE CORPS oversees Apple MACs in the Rosborough Smithey Center, Apple Place, and Diamond Carpenter Computer facility. Apple device tutoring is available in the Apple Place on Wednesdays from 10:30-12:00.

THE ASBURY PHOTO GROUP meets periodically in the Smithy Tech Center in Rosborough. Photo Group members also participate in the Gaithersburg Camera Club monthly meetings hosted here at Asbury.

Continued on page 21

Other Educational Opportunities at Asbury

(Continued)

NORDIC FRIENDS: Nordic Friends welcomes all residents, regardless of heritage, to learn about Nordic ancestry and the histories and cultures of Norway, Sweden, Denmark, Finland, and Estonia. Meetings are held on the third Saturday of each month (except July, August, and December) at 10:30 a.m. in the Hefner Arts and Crafts Room. For more information, call Rhoda MacKenzie, x5676 or email - rhodamac4@aol.com.

OPEN STUDIO FOR ARTISTS: For all who wish to draw or paint, the Hefner Arts and Crafts Room is open every Tuesday and Thursday from 10:00 a.m. to 12:00 noon. Diane Gleason (Diamond 811, x5234) is the coordinator. There is no fee, and the welcome extends indefinitely.

AVTV: This Asbury TV station (channels 975 and 976) often carries educational programs, which are announced in its monthly and weekly schedules. For information, call x6266, or x6202.

JOHNS-HOPKINS OSHER AT ASBURY: Johns Hopkins offers an Asbury Partnership Associate Membership for Osher classes taught on the Asbury campus. Associate membership includes: the opportunity to register for two designated 12-week Partnership Classes at Asbury Methodist Village during one of two consecutive semesters; also, access to the university library system, field trips to cultural events, and preferred participation in university-sponsored events. Asbury resident membership is \$125 per semester. For information, call Patty Malatt x6408.

SHORT STORY BOOK CLUB AT ASBURY: Meets in Conley Hall every 3rd Friday at 3:00 p.m. to discuss a short story that is announced at the end of the prior meeting. For information call Ken Rogers, x5629, CYH-355, krogers6@earthlink.net.

NOTE

Any organization that is run by and for the residents of Asbury Methodist Village and that offers educational opportunities such as classes or lectures is welcome to submit a description of its offerings for inclusion in the Keese School catalog, subject to the approval of the Keese School Curriculum Committee.



REGISTRATION AND ATTENDANCE

There are now two ways to register for Evening and Day classes: with the white paper forms at the back of this catalog or online at www.keeseschoolcatalog.org. The deadline for registration is Monday, August 29, 2022. The registration fee for lectures is \$1.00; for musical events, it is \$8.00. Day Classes fees are listed in the Day Class catalog entry. Evening and Day Classes check attendance at each session using a list provided by the Registrar. If you miss the registration deadline for Evening Classes, you can pay at the door, where each lecture is \$2.00 and each musical event is \$10.00. Late registration for Day Classes requires prior approval of the instructor and submission of the Day Class catalog fee plus \$1 to Ron Stevenson, Registrar, Villa 392. For questions, call Ron Stevenson at x4609

PAPER REGISTRATION

The white tear-out registration forms (pp. 27-30) and late registration submissions should be sent, with a check payable to “The Keese School,” to Ron Stevenson, Registrar, Villa 392. Please send a separate registration form and check **for each person registering**.

ONLINE REGISTRATION

If you prefer, you can register online at the www.keeseschoolcatalog.org website, paying with a credit card instead of a check. Please register **for each person separately**; otherwise, it is hard to untangle who signed up for which offering. If you need assistance with the website, please call Paul Pruitt, Assistant Registrar, at x5229 or email him at socrtwo@gmail.com. Use of this website is entirely optional.

PRESENTATIONS

Keese School events will be presented to audiences in auditoriums and will not be broadcast on AVTV. Most of them will be recorded and can be viewed a few days later at www.keeseschool.org. If you view an event for which you have not paid, we ask you to send the late-registration fee to Linda Pickle, Treasurer, Courtyard 353.

When the Asbury campus is open to visitors, Keese School lectures and musical events will also be open to them. Outside visitors cannot register in advance and are asked to pay the late-registration fee of \$2 or \$10 at the door.

Registration Form First (Fall) Semester 2022-23
 Evening Lectures and **Musical Events** Page — *to keep*
Registration Deadline Monday, August 29
THIS IS YOUR COPY. DON'T SUBMIT IT!!

*See the
 other side of
 the page for
 Daytime
 Classes*

#	Date	Evening Lectures and Musical Performances	Cost	Totals
001		All Evening Lectures & Musical Performances (<i>Don't sign up for any other event on this page.</i>)	\$60.00	
002		All Evening Musical Performances (<i>Don't sign up for any other musical performance.</i>)	\$40.00	
003		All Evening Lectures (<i>Don't sign up for any other lecture.</i>)	\$20.00	
101	Sept 12	Once We Went to the Moon	\$1.00	
102	Sept 15	A Holy Land Pilgrimage	\$1.00	
103	Sept 19	Symphony of the Potomac	\$8.00	
104	Sept 22	Writing Historically Accurate Fiction about World War II	\$1.00	
105	Sept 26	A Tour of Washington - What's New in 2022	\$1.00	
106	Sept 29	Let's Have Fun - Ensemble a la Carte	\$8.00	
107	Oct 3	Making a TV News Story	\$1.00	
108	Oct 6	Harmony Express Barbershop Chorus	\$8.00	
109	Oct 10	Old Myths New Narratives	\$1.00	
110	Oct 13	Montgomery County Sister Cities	\$1.00	
111	Oct 17	The Library of Congress: A Personal Tour	\$1.00	
112	Oct 20	The Birds and the Bees and the Censors	\$1.00	
113	Oct 24	Dr. Stonestreet in Rockville	\$1.00	
114	Oct 27	Byline Ernie Pyle	\$1.00	
115	Oct 31	Hopes and Concerns for Africa's Future	\$1.00	
116	Nov 3	Earth's Energy Balance and Why the Climate is Changing	\$1.00	
117	Nov 7	Asbury Birds	\$1.00	
118	Nov 10	Strengthening Our Community Peace by Peace	\$1.00	
119	Nov 14	Carmina Chamber Choir	\$8.00	
120	Nov 17	Asbury Resident Art Gallery	\$1.00	
121	Nov 21	Spectacular Building Failures	\$1.00	
122	Nov 28	Asbury Residents' Support for Afghan Refugees	\$1.00	
123	Dec 1	The Hot Lanes Presents a Festive Evening of Jazz	\$8.00	
124	Dec 5	Readers Theater at Asbury	\$1.00	
125	Dec 8	Readers Theater at Asbury (repeat of 124)	\$1.00	
Subtotal (Carry forward)				

Registration Form First (Fall) Semester 2022-23

Daytime Classes Page — *to keep*

Registration Deadline Monday, August 29

THIS IS YOUR COPY. DON'T SUBMIT IT!!

#	Begin Date	Daytime Classes and Seminars	Cost	Totals
151	Oct 11	The High Stakes of the 2022 Mid-Term Elections	\$2.00	
152	Sept 14	The History and Archeology of the Bible	\$1.00	
153	Sept 20	Writing Memoirs, Creating a Legacy	\$3.00	
154a	Sept 20	Great Decisions (Returnees from Last Semester)	\$1.00	
154b	Sept 20	Great Decisions (New Registrants)	\$31.00*	
155	Sept 12	The Tyrant and His Base: Authoritarian Populism	\$1.00	
156	Oct 3	Shakespeare's <i>The Winter's Tale</i>	\$1.00	
157	Sept 13	Art Class	\$60.00	
		Daytime Classes and Seminars Subtotal		
*Includes book- let of reading material for both the Spring and Fall 2022 semesters.		Evening Lectures and Musical Performances Subtotal <i>(Carry over from the previous page)</i>		
		Total Amount Due		

Retain This Copy for Your Records

Registration Form First (Fall) Semester 2022-23
Evening Lectures and Musical Events Page — to keep
Registration Deadline Monday, August 29
THIS IS YOUR COPY. DON'T SUBMIT IT!!

*See the
other side of
the page for
Daytime
Classes*

#	Date	Evening Lectures and Musical Performances	Cost	Totals
001		All Evening Lectures & Musical Performances (<i>Don't sign up for any other event on this page.</i>)	\$60.00	
002		All Evening Musical Performances (<i>Don't sign up for any other musical performance.</i>)	\$40.00	
003		All Evening Lectures (<i>Don't sign up for any other lecture.</i>)	\$20.00	
101	Sept 12	Once We Went to the Moon	\$1.00	
102	Sept 15	A Holy Land Pilgrimage	\$1.00	
103	Sept 19	Symphony of the Potomac	\$8.00	
104	Sept 22	Writing Historically Accurate Fiction about World War II	\$1.00	
105	Sept 26	A Tour of Washington - What's New in 2022	\$1.00	
106	Sept 29	Let's Have Fun - Ensemble a la Carte	\$8.00	
107	Oct 3	Making a TV News Story	\$1.00	
108	Oct 6	Harmony Express Barbershop Chorus	\$8.00	
109	Oct 10	Old Myths New Narratives	\$1.00	
110	Oct 13	Montgomery County Sister Cities	\$1.00	
111	Oct 17	The Library of Congress: A Personal Tour	\$1.00	
112	Oct 20	The Birds and the Bees and the Censors	\$1.00	
113	Oct 24	Dr. Stonestreet in Rockville	\$1.00	
114	Oct 27	Byline Ernie Pyle	\$1.00	
115	Oct 31	Hopes and Concerns for Africa's Future	\$1.00	
116	Nov 3	Earth's Energy Balance and Why the Climate is Changing	\$1.00	
117	Nov 7	Asbury Birds	\$1.00	
118	Nov 10	Strengthening Our Community Peace by Peace	\$1.00	
119	Nov 14	Carmina Chamber Choir	\$8.00	
120	Nov 17	Asbury Resident Art Gallery	\$1.00	
121	Nov 21	Spectacular Building Failures	\$1.00	
122	Nov 28	Asbury Residents' Support for Afghan Refugees	\$1.00	
123	Dec 1	The Hot Lanes Presents a Festive Evening of Jazz	\$8.00	
124	Dec 5	Readers Theater at Asbury	\$1.00	
125	Dec 8	Readers Theater at Asbury (repeat of 124)	\$1.00	
Subtotal (Carry forward)				

Registration Form First (Fall) Semester 2022-23

Daytime Classes Page — *to keep*

Registration Deadline Monday, August 29

THIS IS YOUR COPY. DON'T SUBMIT IT!!

#	Begin Date	Daytime Classes and Seminars	Cost	Totals
151	Oct 11	The High Stakes of the 2022 Mid-Term Elections	\$2.00	
152	Sept 14	The History and Archeology of the Bible	\$1.00	
153	Sept 20	Writing Memoirs, Creating a Legacy	\$3.00	
154a	Sept 20	Great Decisions (Returnees from Last Semester)	\$1.00	
154b	Sept 20	Great Decisions (New Registrants)	\$31.00*	
155	Sept 12	The Tyrant and His Base: Authoritarian Populism	\$1.00	
156	Oct 3	Shakespeare's <i>The Winter's Tale</i>	\$1.00	
157	Sept 13	Art Class	\$60.00	
		Daytime Classes and Seminars Subtotal		
*Includes booklet of reading material for both the Spring and Fall 2022 semesters.		Evening Lectures and Musical Performances Subtotal <i>(Carry over from the previous page)</i>		
		Total Amount Due		

Retain This Copy for Your Records



Tear here

Registration Form First (Fall) Semester 2022-23
Evening Lectures and Musical Events Page to submit
Registration Deadline Monday, August 29
Please print. Only register one person per form.

*See the
other side of
the page for
Daytime
Classes*

Last Name	First	Bldg/Apt	Email (optional)		
#	Date	Evening Lectures and Musical Performances		Cost	Totals
001	All Evening Lectures & Musical Performances (<i>Don't sign up for any other event on this page</i>)			\$60.00	
002	All Evening Musical Performances (<i>Don't sign up for any other musical performance</i>)			\$40.00	
003	All Evening Lectures (<i>Don't sign up for any other lecture</i>)			\$20.00	
101	Sept 12	Once We Went to the Moon		\$1.00	
102	Sept 15	A Holy Land Pilgrimage		\$1.00	
103	Sept 19	Symphony of the Potomac		\$8.00	
104	Sept 22	Writing Historically Accurate Fiction About World War II		\$1.00	
105	Sept 26	A Tour of Washington — What's New in 2022		\$1.00	
106	Sept 29	Let's Have Fun — Ensemble a la Carte		\$8.00	
107	Oct 3	Making a TV News Story		\$1.00	
108	Oct 6	Harmony Express Barbershop Chorus		\$8.00	
109	Oct 10	Old Myths New Narratives		\$1.00	
110	Oct 13	Montgomery County Sister Cities		\$1.00	
111	Oct 17	The Library of Congress: A Personal Tour		\$1.00	
112	Oct 20	The Birds and the Bees and the Censors		\$1.00	
113	Oct 24	Dr. Stonestreet in Rockville		\$1.00	
114	Oct 27	Byline Ernie Pyle		\$1.00	
115	Oct 31	Hopes and Concerns for Africa's Future		\$1.00	
116	Nov 3	Earth's Energy Balance and Why the Climate is Changing		\$1.00	
117	Nov 7	Asbury Birds		\$1.00	
118	Nov 10	Strengthening our Community Peace by Peace		\$1.00	
119	Nov 14	Carmina Chamber Choir		\$8.00	
120	Nov 17	Asbury Resident Art Gallery		\$1.00	
121	Nov 21	Spectacular Building Failures		\$1.00	
122	Nov 28	Asbury Residents' Support for Afghan Refugees		\$1.00	
123	Dec 1	The Hot Lanes Presents a Festive Evening of Jazz		\$8.00	
124	Dec 5	Readers Theater at Asbury		\$1.00	
125	Dec 8	Readers Theater at Asbury (repeat of 124)		\$1.00	
Subtotal (Carry forward)					

Registration Form First (Fall) Semester 2022-23

Daytime Classes Page *to submit*

Registration Deadline Monday, August 29

Please print. Only register one person per form.



Last Name		First	Bldg/Apt	Email (optional)	
#	Begin Date	Daytime Classes and Seminars		Costs	Totals
151	Oct 11	The High Stakes of the 2022 Mid-Term Elections		\$2.00	
152	Sept 14	The History and Archeology of the Bible		\$1.00	
153	Sept 20	Writing Memoirs, Creating a Legacy		\$3.00	
154a	Sept 20	Great Decisions (Returnees from Last Semester)		1.00	
154b	Sept 20	Great Decisions (New Registrants)		\$31.00*	
155	Sept 12	The Tyrant and His Base: Authoritarian Populism		\$1.00	
156	Oct 3	Shakespeare's <i>The Winter's Tale</i>		\$1.00	
157	Sept 13	Art Class		\$60.00	
Daytime Classes and Seminars Subtotal					
*Includes booklet of reading material for both spring and fall 2022 semesters		Evening Lectures and Musical Performances Subtotal <i>(Carry over from the previous page)</i>			
		Total Amount Due			

*Please send this form with check(s) made out to the **Keese School** addressed to **Ron Stevenson, Keese School registrar, Villa 392**, by Monday August 29, 2022.*

*Differing from previous semesters, please send a registration form and a check for **EACH** member of a couple (**TWO** registration forms and **TWO** checks in all).*

If donating as well to the Keese School Education Awards, *make a separate check out to the **Asbury Foundation** with a note that the money is for the **Keese School Education Awards***. The latter check is tax deductible whereas the one for the Keese School registration is not.



Tear here

Registration Form First (Fall) Semester 2022-23
 Evening Lectures and Musical Events Page to submit
Registration Deadline Monday, August 29
 Please print. Only register one person per form.

*See the
 other side of
 the page for
 Daytime
 Classes*

Last Name	First	Bldg/Apt	Email (optional)		
#	Date	Evening Lectures and Musical Performances		Cost	Totals
001	All Evening Lectures & Musical Performances (<i>Don't sign up for any other event on this page</i>)			\$60.00	
002	All Evening Musical Performances (<i>Don't sign up for any other musical performance</i>)			\$40.00	
003	All Evening Lectures (<i>Don't sign up for any other lecture</i>)			\$20.00	
101	Sept 12	Once We Went to the Moon		\$1.00	
102	Sept 15	A Holy Land Pilgrimage		\$1.00	
103	Sept 19	Symphony of the Potomac		\$8.00	
104	Sept 22	Writing Historically Accurate Fiction About World War II		\$1.00	
105	Sept 26	A Tour of Washington — What's New in 2022		\$1.00	
106	Sept 29	Let's Have Fun — Ensemble a la Carte		\$8.00	
107	Oct 3	Making a TV News Story		\$1.00	
108	Oct 6	Harmony Express Barbershop Chorus		\$8.00	
109	Oct 10	Old Myths New Narratives		\$1.00	
110	Oct 13	Montgomery County Sister Cities		\$1.00	
111	Oct 17	The Library of Congress: A Personal Tour		\$1.00	
112	Oct 20	The Birds and the Bees and the Censors		\$1.00	
113	Oct 24	Dr. Stonestreet in Rockville		\$1.00	
114	Oct 27	Byline Ernie Pyle		\$1.00	
115	Oct 31	Hopes and Concerns for Africa's Future		\$1.00	
116	Nov 3	Earth's Energy Balance and Why the Climate is Changing		\$1.00	
117	Nov 7	Asbury Birds		\$1.00	
118	Nov 10	Strengthening our Community Peace by Peace		\$1.00	
119	Nov 14	Carmina Chamber Choir		\$8.00	
120	Nov 17	Asbury Resident Art Gallery		\$1.00	
121	Nov 21	Spectacular Building Failures		\$1.00	
122	Nov 28	Asbury Residents' Support for Afghan Refugees		\$1.00	
123	Dec 1	The Hot Lanes Presents a Festive Evening of Jazz		\$8.00	
124	Dec 5	Readers Theater at Asbury		\$1.00	
125	Dec 8	Readers Theater at Asbury (repeat of 124)		\$1.00	
Subtotal (Carry forward)					

Registration Form First (Fall) Semester 2022-23

Daytime Classes Page to submit

Registration Deadline Monday, August 29

Please print. Only register one person per form.



Tear here

Last Name		First	Bldg/Apt	Email (optional)	
#	Begin Date	Daytime Classes and Seminars		Costs	Totals
151	Oct 11	The High Stakes of the 2022 Mid-Term Elections		\$2.00	
152	Sept 14	The History and Archeology of the Bible		\$1.00	
153	Sept 20	Writing Memoirs, Creating a Legacy		\$3.00	
154a	Sept 20	Great Decisions (Returnees from Last Semester)		1.00	
154b	Sept 20	Great Decisions (New Registrants)		\$31.00*	
155	Sept 12	The Tyrant and His Base: Authoritarian Populism		\$1.00	
156	Oct 3	Shakespeare's <i>The Winter's Tale</i>		\$1.00	
157	Sept 13	Art Class		\$60.00	
		Daytime Classes and Seminars Subtotal			
*Includes booklet of reading material for both spring and fall 2022 semesters		Evening Lectures and Musical Performances Subtotal (Carry over from the previous page)			
		Total Amount Due			

*Please send this form with check(s) made out to the **Keese School** addressed to **Ron Stevenson, Keese School registrar, Villa 392**, by Monday August 29, 2022.*

*Differing from previous semesters, please send a registration form and a check for **EACH** member of a couple (**TWO** registration forms and **TWO** checks in all).*

If donating as well to the Keese School Education Awards, make a separate check out to the **Asbury Foundation** with a note that the money is for the **Keese School Education Awards**. The latter check is tax deductible whereas the one for the Keese School registration is not.

Credo **(FROM 1978)**

We live at Asbury Village

“where aging becomes an
adventure in living.”

We believe that:

- Participation in the School promotes a mingling of residents on the basis of mutual interests and intellectual curiosity, and
- Retired people enjoy study that stimulates the mental processes, opens new interests, and may develop ongoing education.



**The Keese School
of Continuing Education**

ASBURY METHODIST VILLAGE